

# PROSPECTUS

2019-2020



*Michael Madhusudan Memorial College*

Kabi Guru Sarani, City Centre, Durgapur, District: Burdwan, W.B, PIN:713216

[www.madhusudancollege.in](http://www.madhusudancollege.in)

**ESTD : 1996**

**Affiliated to Kazi Nazrul University, Asansol**

**Assessed & Accredited by NAAC in Cycle-II**  
(Grade-B with CGPA : 2.40)

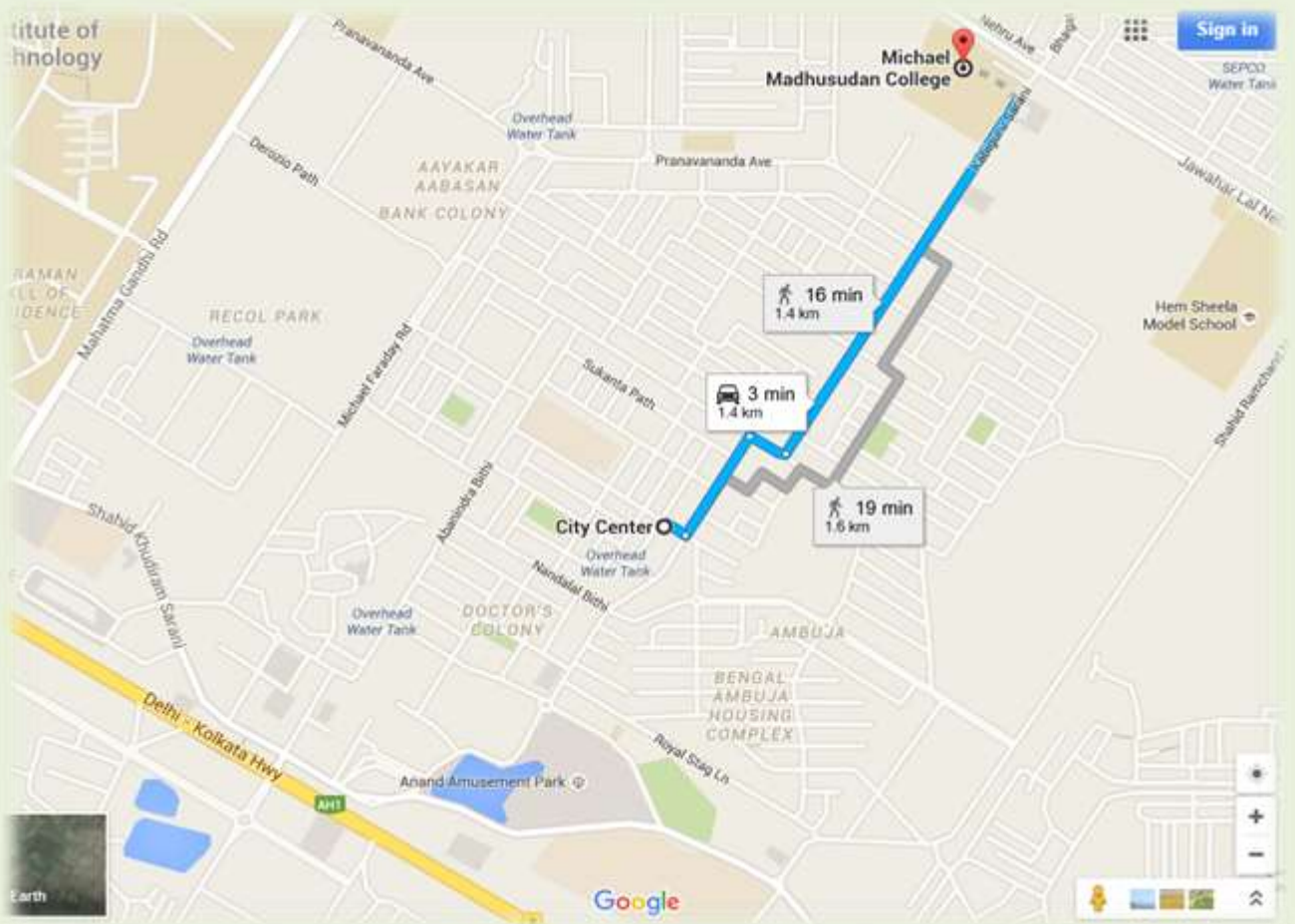
## HISTORY OF THE COLLEGE

Michael Madhusudan Memorial College, established in 1996 and affiliated to the University of Burdwan, had a humble beginning with the traditional courses in Arts and Commerce. The Institute always tried to grow in tune with the demand of the society and public. The first milestone of the college was the introduction of Honours in English and Geography in 2000. The second milestone was the introduction of professional courses in B.B.A (H) and B.C.A (H). Later on courses in Science stream was opened in Physics, Microbiology, Mathematics, Zoology, Chemistry. At present the college runs successfully twenty departments of which twelve courses are having Honours (English, Bengali, Geography, History, Philosophy, Education, Hindi, Physics, Mathematics, Computer Science, Microbiology, Accountancy), two professional courses (B.B.A. and B.C.A.) and seven general courses (Political Science, Economics, Hindi, Sanskrit, Music, Chemistry, Zoology).

The Institution envisions the kind of College which would become the Centre of excellence, with a wide spectrum of subjects catering to the needs of all categories of students. The college had its first NAAC Peer Team visit in 2008 and achieved B grade. The significant measures have been taken for a holistic academic ambience to maintain standard of higher education in the institute.

## LOCATION

Michael Madhusudan Memorial College is situated in the heart of the beautiful industrial city of Durgapur. The ambience of the college is serene, placid and conducive to academic pursuits. It is about ten kilometers away from Durgapur railway station and hardly two km away from City Centre, this college is easily accessible.



## PRINCIPAL'S MESSAGE



### DR. G. M . HELALUDDIN

It is an honor and proud privilege to be the Principal of Michael Madhusudan Memorial College, Durgapur. It was a dream project of Dr. Bidhan Chandra Roy. As an academic administrator my motto is to spread the light of education at the heart of students'. My target is not just imparting knowledge to the students, but to inculcate in them - wisdom, compassion and a humanitarian spirit along with discipline, values and integrity.

It is said *"If you are planning for a year, sow rice; if you are planning for a decade, plant trees; if you are planning for a lifetime, educate people"*. Indeed, one can even say that the quality of education will determine the density of the nation I strongly desire to witness in my students an unparalleled knowledge base, a vibrant dynamism, an acute consciousness about the world around them .I am optimistic that in near future the college will have more academic and research facilities increasing interface with emerging industries, diversified interdisciplinary activities, combining professionalism with human values.

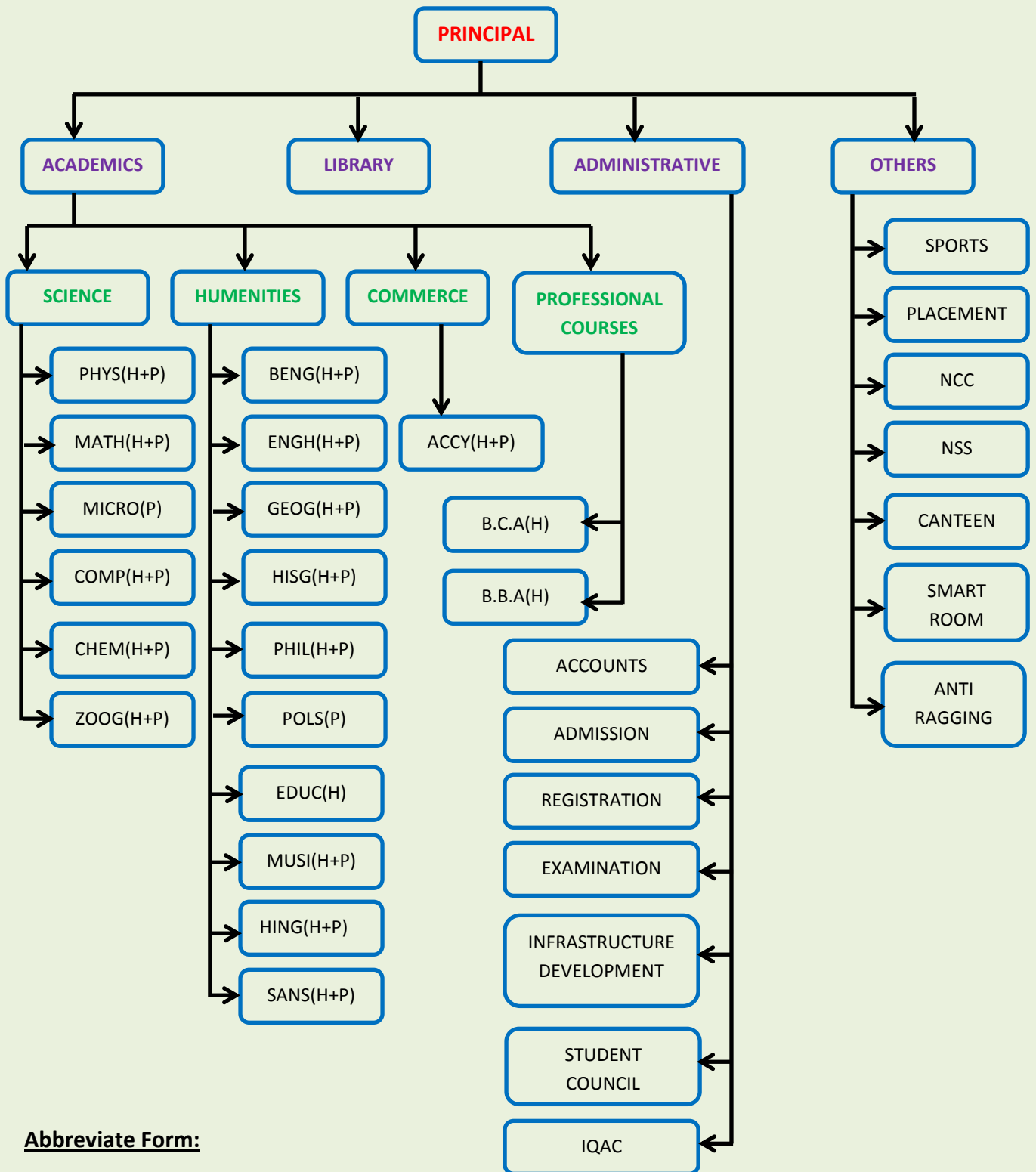
## OUR VISION

Our vision is to prepare students who would understand and implement the value of education in their daily practical life so that they become good human resources.

## OUR MISSION

- ❖ The college aims at unfolding to the fullest, the potentialities of the students. We are motivated by the vision to produce good citizens, developed both in brain and brawn.
- ❖ To nourish and nurture the spirit of secularism and promote the sense of national integration.
- ❖ To empower the students for getting jobs in diverse sectors.
- ❖ To encourage and motivate Teachers for research work in order to enhance the academic qualifications and upliftment so that they become better Teachers tomorrow and play effective role in other sphere of activities.
- ❖ To integrate curricular knowledge with value education and need based training.
- ❖ To provide support to the students belonging to financially and socially under privileged section.
- ❖ Apart from the academic aspects, the college endeavors to sensitize the students to the condition of the country and its problems through various cultural programs
- ❖ The college always fosters the spirits of mutual tolerance, peaceful co - existence of different communities, castes and creeds and respect for the national heritage and national integration.

# ORGANIZATION STRUCTURE



**Abbreviate Form:**

**PHYS** :Physics    **MTMH** :Mathematics    **MICRO** :Microbiology    **COMP** :Computer Science  
**CHEM** :Chemistry    **ZOOG** :Zoology    **BENG** :Bengali    **ENGH** :English    **GEOG** :Geography  
**HISG** : History    **PHIL** :Philosophy    **POLS** :Political Science    **EDUC** :Education    **MUSI** :Music  
**HING** :Hindi    **SANS** :Sanskrit

## GOVERNING BODY:

The college is managed by Governing Body, the highest decision making authority, formed under KaziNazrul University, Asansol. Following are the members of the Governing Body.

SL. No.	NAME	DESIGNATION
1	Shri. Dilip Kumar Agasty	President Of the Governing Body
2	Dr. Golam. Md. Helaluddin	Principal & Secretary of the Governing Body
3	Mr. Jiten Chatterjee	Government Nominee
4	Dr. Parimal Ghosh	Government Nominee
5	Dr. Snighda Chandra	Nominee of West Bengal State Council Of Higher Education
6	Dr. Debnath Palit	University Nominee
7	Prof J.N Roy	University Nominee
8	Dr. Ranjan Kumar Mandal	Teachers' Representative
9	Prof. Sarmistha Saha	Teachers' Representative
10	Prof. Prosanta Saha	Teachers' Representative
11	Shri. Dhananjoy Chatterjee	Non-Teachings' Representative

## ALUMNI ASSOCIATION

Established in 2015, Michael Madhusudan Memorial College Alumni Association creates and maintains a lifelong connection between the institute and its alumni. In collaboration with an extremely dedicated volunteer board of directors, the Alumni Association works to connect alumni, support students and build an unforgettable Institute experience through a diversity of events, programming and services. The mission of the Association is to foster strong bonds between alumni, students and the Institute, to keep alumni informed and create a network enabling them to remain engaged with their alma mater and help shape it's future through the Association programs and services.



## DIFFERENT COMMITTEES

There are various committees which are formed to look after the diversified issues of the college viz Finance committee, Purchase committee, Academic subcommittee, Examination committee, Canteen committee, Sports, Hostel, Grievance redressal, Gender sensitization and sexual harassment cell.

## IQAC (INTERNAL QUALITY ASSURANCE CELL)

The Internal Quality Assurance cell, was formed in 2008 post NAAC accreditation. It is an active body that conducts assessments for various academic and administration issues based on the feedback of students and other stake holders. Besides this, the cell also prepares the Annual Quality Assurance Reports (AQAR) that is sent to NAAC.



## COLLEGE TIMINGS

**Morning Session** : 7:30am-12:30pm (Only For Commerce)  
**DAY Session** : 10:30am-5.30pm (For Science & Humanities)



## ATTENDANCE

Students must attend at least 75% of the total lectures delivered in an academic session in each subject. In case the percentage of attendance falls short of 60%, the defaulting students would not be allowed to appear in the University examinations.

## CODE OF CONDUCT

- Students must maintain strict discipline. They must be decently dressed and should refrain from any sort of activities which are unbecoming of the students. Any sort of indiscipline activities would lead to rustication from college.
- Any sort of vandalism like breaking of furniture, college properties or misappropriating any items of the college would lead to fine or punishments or both. Students must attend their classes regularly.
- If anyone is compelled to absent himself / herself for a number of days consecutively he or she must inform the principal of the matter well in advance.
- If they fail to pay college fees within notified dates , fines as fixed by the college authorities would have to be paid College is the Alma matter, sacred temple of learning Students should bear this in mind and do nothing which would vitiate or taint the ambience of the college.
- Loyalty to and love for the college is expected from the students.

## EXAMINATION SYSTEM

- Semester Based (Under CBCS [Choice Based Credit System] System Conducted By The Kazi Nazrul University,Asansol)
- Class Test / Unit Test (On Regular Basis Conducted By The College Authority )

## ADMISSION PROCEDURE

Michael Madhusudan Memorial College welcomes students for three year B.A/B.Sc./B.Com degree courses and B.B.A., B.C.A .professional courses. Students, who have passed Higher Secondary, ISC, CBSC, or its equivalent examinations, are eligible to apply.

Admission procedure is conducted through online ([www.madhusudancollege.in](http://www.madhusudancollege.in)) basis (excluding professional courses like B.C.A, B.B.A).The candidates may apply for Honours/Core and General/Programme, online selection is made on merit basis through online counseling.

## ACADEMIC SESSION

The academic session commences from **July** and closes on **June** the following year.

## LIBRARY

The college Library facility is enough to cater to the needs of the students. The College has a central library with well stocked 13670 texts and 765 reference and also advanced level books, magazines. Some department has a supporting seminar library for average and also advanced learners.

A new library software (**Kohadespace**) has been introduced, so that Avid Students' and faculty members have ample scope for enriching themselves.



## PLACEMENT CELL

The College has a Placement Cell of his own and it has been playing a vital role. Many students are finding job opportunities through off and on-campus interviews by various companies. After passing through grueling interviews, students of this college are selected and offered lucrative jobs. The college envisions for more interviews for the students in the years to come. Many students of our college are selected every year by the Wipro Group, IBM, Infosys, TCS, Contingent, Future General Insurance etc.

## SPORTS

College provides its students with games and sports facilities. The college arranges indoor games like carom, chess. The outdoor games section has badminton court, volleyball court, cricket and football playground etc. The college holds its Annual sports on its own playground in the month of December every year .Besides this, the college participates in various inter college sports meet and has many prizes to its credit.

College has hosted the Annual Athlete Meet, prize distribution and closing ceremony of The Kazi Nazrul University for the academic year 2015-2016.

College has also conducted intra college Cricket Tournament in January 2017 and won the first prize.



## GYMNASIUM

Healthy mind resides in a healthy body. Keeping this truth in mind, a sophisticated gymnasium has been set up, and the students can avail themselves of its modern facilities with equipment's like, Square Weight Stand , Jogger, Electronic Cycle, Multigame Twelve Stations, Multi-Purpose Bench,

## **STUDENTS' UNION**

Students' Union plays an important and constructive role in the overall improvement of the college. The voice of the students council is given due weightage by incorporating their representative in different sub - committees of the college. They organize and actively participate in cultural activities exhibitions, sports, voluntary blood donation every year. It deserves mention that in 2012 our College Cricket team has become Runner - Up in the intercollege sports meet and became runner- up at the state level football games. In the field of athletics our students prove their excellence. Our students participated in table tennis at National level in 2010.



## **COLLEGE CANTEEN**

There is a canteen near the college gate where the students and staff of the college can buy food at a reasonable rate. It functions during the working hours of the college.

## **GRIEVANCE REDRESSAL CELL**

Aggrieved students may post their grievances in the grievance cell box earmarked for the purpose. Genuine grievances are redressed in a meeting of the Grievance Redressal cell committee and remedial measures are suggested.

## COLLEGE MAGAZINE

The College publishes an annual magazine **Amritakhkhar** with articles, stories and verses written by students as well as faculty members. Some departments excel in exhibiting thematic wall magazines also.



## LABORATORIES

The Science departments like Physics, Mathematics, Computer Science, Microbiology, Geography and BCA have well equipped laboratories, which are upgraded time to time.



## COLLEGE CAMPUS

The college justifiably prides itself on a sprawling campus comprising 15 acres of land. We have two-storied buildings with enough commodious spaces of more than 30,000 sq. feet housing around 40 classrooms. A new building has come up. There is an auditorium and a Central library. The College has a canteen which caters to the needs of the students and the staff of the College. The Central Bank of India, Branch is housed in the first floor of the canteen building. There is a lovely playground, which is being improved upon.



## SOCIAL AND CULTURAL ACTIVITIES:

The college is vibrant with social and cultural activities. The National Service Unit of the College is actively participating in various social and cultural activities and helping the children of the adjoining slums and shanties. It organizes Voluntary Blood Donation Camp and afforestation programme every year. Students from this College have represented The Kazi Nazrul University and participated at the state level in games and sports. Each & every year the College organizes exhibitions, seminars and workshops, where students get scope to interact with industrialist and professionals. The College has also an N.S.S. Unit. The Students may join this unit.



## NSS AND NCC PROGRAMMES

- Tree plantation Program
- Blood donation Program
- AIDS awareness Program
- Cancer awareness Program
- Eye check-up Program
- Campus Cleaning Program
- Literacy Program in Special Camp
- Program for sensitization of Traffic Rules
- Disaster Relief Program on occurrence
- Election Duty
- Anti-Leprosy Drive
- Impact on the Students

Participation of students in the various extension activities helps them to acquire the following attributes.

- Development of the urge for volunteer service and also a sense of social accountability among the students.
- Improvement of their leadership potential and enterprising skill.
- Improvement of team spirit.
- Expose them to the realities of life faced by the underprivileged.





## COLLEGE GARDEN

The natural beauty of green grass, trees and flowers helps in developing a positive attitude towards the life.

Our college has a ground of blooming flowers and medicinal plants.



## COLLEGE OFFICE

Office activities are fully computerized with network facility. Any kind of queries may be made during working hours of the office , that is from 11.00 AM to 2.00 P.M. Details of the students are maintained in the computerized system and are readily available as and when required.

## FACILITIES

- ✚ A green generator is installed for uninterrupted power supply.
- ✚ The college has Wi-fi facility and internet connections in the Office, Staffroom, Library and lab based Departments.
- ✚ CCTV cameras have been installed in nodal positions within the College to monitor discipline and maintain security of the campus.
- ✚ The college has a cycle stand.
- ✚ Water purifier is provided for the students and the staffs.
- ✚ INFLIBNET -KOHA, DESPACE has been introduced.
- ✚ Smart Class Room
- ✚ Virtual Class Room
- ✚ PHOTO COPIER-XEROX facility is available to the students on a subsidized rate.

## MEMBERS OF ACADEMIC STAFF

**Principal :** Dr. Golam Md. Helaluddin (M.Sc , Ph.D)

### FACULTY OF ARTS STUDY

#### DEPARTMENT OF BENGALI

- |                           |                                   |
|---------------------------|-----------------------------------|
| 1. Prof. Lipika Sarkar    | M.A. M.Phil                       |
| 2. Prof. Subhashree Patra | M.A. M.Phil                       |
| 3. Prof. Rumki Banerjee   | M.A. M.Phil                       |
| 4. Prof. Utpal Mondal     | M.A.                              |
| 5. Dr. Sushil Rudra       | M.A , Ph.D<br>(Retd. Asso. Prof.) |

#### DEPARTMENT OF ENGLISH

- |                                |                         |
|--------------------------------|-------------------------|
| 1. Prof. Pranab Kumar Biswas   | M.A.                    |
| 2. Prof. Jyotirmoy Patowari    | M.A.                    |
| 3. Prof. Shreya Talukdar       | M.A. M.Phil             |
| 4. Prof. Madhumita Chakraborty | M.A.                    |
| 5. Prof. Ajanta Hazra          | M.A.                    |
| 6. Prof. Basudev Hazra         | (Retd. Asso. Prof.) M.A |
| 7. Prof. Tanusree Das          | M.A                     |
| 8. Dr. Anugamini Rai           | M.A, Ph.D               |
| 9. Dr. Lutfar Rahaman          | M.A, Ph.D               |

#### DEPARTMENT OF HISTORY

- |                                |             |
|--------------------------------|-------------|
| 1. Dr. Ranjan Kumar Mondal     | M.A., Ph.D  |
| 2. Prof. Kakali Guha Thakurata | M.A.        |
| 3. Prof. Jaya Banerjee         | M.A. , B.Ed |
| 4. Prof. Indrajit Sarkar       | M.A         |

#### DEPARTMENT OF PHILOSOPHY

- |                                  |      |
|----------------------------------|------|
| 1. Prof. Sangita Goutam          | M.A. |
| 2. Prof. Swatikana Mondal        | M.A. |
| 3. Prof. Madhuchhanda Chatterjee | M.A. |
| 4. Prof. Indrani Mitra           | M.A. |

### **DEPARTMENT OF MUSIC**

- |                            |               |
|----------------------------|---------------|
| 1. Dr. Debanjan Chatterjee | M.Music, Ph.D |
| 2. Prof. Sraboni Mondal    | M.Music       |

### **DEPARTMENT OF POLITICAL SCIENCE**

- |                         |     |
|-------------------------|-----|
| 1. Prof. Nabanita Sinha | M.A |
| 2. Prof. Subhasis Ghosh | M.A |

### **DEPARTMENT OF SANSKRIT**

- |                              |              |
|------------------------------|--------------|
| 1. Prof. Swadhin Kr. Mandal  | M.A. ,M.Phil |
| 2. Prof. Alok Kumar Maity    | M.A.         |
| 3. Prof. Durba Bhattacharjee | M.A.         |

### **DEPARTMENT OF EDUCATION**

- |                            |      |
|----------------------------|------|
| 1. Prof. Prasanta Saha     | M.A. |
| 2. Prof. Subhankar Ghosh   | M.A. |
| 3. Prof. Anushree Ghosh    | M.A. |
| 4. Prof. Sk. Abdul Samim   | M.A. |
| 5. Prof. Allauddin Middyia | M.A  |

### **DEPARTMENT OF HINDI**

- |                            |            |
|----------------------------|------------|
| 1. Dr.Rukaiya Saheen       | M.A. Ph. D |
| 2. Dr. Meena Kumari        | M.A. Ph.D  |
| 3. Prof. Bijoy Kr. Choubey | M.A.       |
| 4. Prof. Sarika Burman     | M.A.       |

## **FACULTY OF SCIENCE STUDY**

### **DEPARTMENT OF CHEMISTRY**

- |                            |                      |
|----------------------------|----------------------|
| 1. Dr. Chandramohon Jana   | M.Sc, Ph.D, Post-Doc |
| 2. Prof. Alka Bhattacharya | M.Sc.                |
| 2. Prof. Chaitali Ghosh    | M.Sc.                |

## **DEPARTMENT OF ZOOLOGY**

- |                          |              |
|--------------------------|--------------|
| 1. Dr. Atreyee Sahana    | M.Sc. , Ph.D |
| 2. Prof. Sangeeta Sarkar | M.Sc         |
| 3. Prof. Preeti Mondal   | M.Sc         |

## **DEPARTMENT OF MICROBIOLOGY**

- |                              |                       |
|------------------------------|-----------------------|
| 1. Dr. Kirat Kumar Ganguly   | M.Sc , Ph.D, Post-Doc |
| 2. Prof. Aparupa Khan        | M.Sc                  |
| 3. Prof. Arpan Dasgupta      | M.Sc                  |
| 4. Prof. Subhodeep Mukherjee | M.Sc                  |
| 5. Prof. Mamoni Mondal       | M.Sc                  |

## **DEPARTMENT OF COMPUTER SCIENCE**

- |                                   |        |
|-----------------------------------|--------|
| 1. Prof. Santanu Mondal           | M.Tech |
| 2. Prof. Anindya Sundar Mukherjee | M.C.A. |
| 3. Prof. Sandip Kumar Acharya     | M.C.A. |
| 4. Prof. Anupam Chatterjee        | M.C.A. |
| 5. Prof. Partha Pratim Chattaraj  | M.C.A. |
| 6. Prof. Smitaparna Roy           | M.Tech |

## **DEPARTMENT OF PHYSICS**

- |                            |             |
|----------------------------|-------------|
| 1. Dr. Dipali Ghosh        | M.Sc. Ph.D. |
| 2. Dr. Suparna Chakraborty | M.Sc. Ph.D  |
| 3. Prof. Billodal Dutta    | M.Sc.       |
| 4. Prof. Moumita Rakshit   | M.Sc        |

## **DEPARTMENT OF MATHEMATICS**

- |                             |            |
|-----------------------------|------------|
| 1. Prof. Palash Goswami     | M.Sc.      |
| 2. Dr. Kajal Chatterjee     | M.Sc. Ph.D |
| 3. Dr. Dalbinder Kaur       | M.Sc. Ph.D |
| 4. Dr. Pushpa Sharma        | M.Sc,Ph.D. |
| 5. Prof. Saikat Majee       | M.Sc       |
| 6. Prof. Saswati Mukherjee. | M.Sc       |

## **DEPARTMENT OF GEOGRAPHY**

1. Dr. Sribash Tikader	M.A.Ph.D
2. Prof. Sarmistha Saha	M.A. M.Phil
3. Prof. Sumana Dey Sarkar	M.A.
4. Prof. Sumana Pal	M.A.

## **DEPARTMENT OF ECONOMICS**

1. Prof. Jayanta. Hazra	M.A.,M.B.A.
2. Prof. Soma Sanyal	M.Sc.

## **FACULTY OF COMMERCE STUDY**

## **DEPARTMENT OF COMMERCE**

1. Prof. Sadhan Kumar Pradhan	M.Com.
2. Prof. Uddalak Dasgupta	M.Com.
3. Prof. Sanjit Sarkar	M.Com
4. Prof. Pathik Sarkar	M.Com

## **FACULTY OF PROFESSIONAL STUDY**

## **DEPARTMENT OF B.B.A**

1. Dr. Sagarika Mukherjee	MBA,Ph.D
2. Dr. Goutam Chatterjee	M.Sc.,FCMA,Ph.D
3. Prof. Bijoy Bhattacharjee	M.Com, M.phil
4. Prof. Jayanta Hazra	M.Sc. MBA
5. Prof. Dhananjoy Chatterjee	M.Com., MBA
6. Dr. Dalbinder Kaur	M.Sc. Ph.D
8. Prof. Smitaparna Biswas	M.Tech

## **DEPARTMENT OF B.C.A**

1. Prof. Santanu Mondal	M.Tech
2. Prof. Anindya Sundar Mukherjee	M.C.A.
3. Prof. Sandip Kumar Acharya	M.C.A.
4. Prof. Anupam Chatterjee	M.C.A.
5. Prof. Partha Pratim Chattaraj	M.C.A.
6. Prof. Dhananjoy Chatterjee	M.Com., MBA
7. Dr. Kajal Chatterjee	M.Sc., Ph.D
8. Dr. Dalbinder Kaur	M.Sc., Ph.D
9. Prof. Smitaparna Roy	M.Tech

## **MEMBERS OF ADMINISTRATIVE & LIBRARY STAFF**

1. Shri. Dhananjoy Chatterjee
2. Shri. Sibasish Chatterjee
3. Shri. Pranab Kr. Roy
4. Shri. Ananda Gopal Chattaraj
5. Shri. Lab Kumar Maji
6. Smt. Sunita Tudu
7. Shri. Sunil Kr. Tudu
8. Shri. Goutam Kumar Das
9. Shri. Kamakshya Bouri
10. Mr. Sk. Ahmmad
11. Smt. Parul Dey
12. Smt. Kalpana Das
13. Shri. Giridhari Das
14. Shri. Tarkeshwar Prasad Shaw
15. Shri. Santi Ranjan Biswas
16. Shri. Sohan Chandra Murmu
17. Shri. Sanjoy Rajak
18. Smt. Jayeeta Chatterjee
19. Mr. Aslam Parvej
20. Shri. Sukhen Bouri
21. Shri. Subhasis Ghosh
22. Smt. Arpita Choudhury
23. Shri. Binay Bouri
24. Shri. Bhol Nath Banerjee

## LIBRARIAN

1. Shri. Ananda Manna
2. Shri. Anup Kumar Modak

M.A , MLIS  
MLIS

## COURSES OFFERED

STREAM	COURSE NAME
<b>B.Sc</b>	Computer Science (Hons. & Programme)
	Physics (Hons & Programme)
	Microbiology (Hons.)
	Mathematic (Hons. & Programme)
	Zoology (Hons. & Programme)
	Chemistry (Hons. & Programme)
	Geography (Hons. & Programme)
	Economics (Programme)
<b>B.A</b>	Music (Hons. & Programme)
	Bengali (Hons. & Programme)
	Hindi (Hons. & Programme)
	English (Hons. & Programme)
	History (Hons & Programme)
	Philosophy (Hons. & Programme)
	Education (Hons.)
	Political Science (Programme)
	Sanskrit (Hons & Programme)
<b>B.Com</b>	Accountancy (Hons. & Programme)
<b>Professional</b>	B.C.A (Hons.)
	B.B.A (Hons.)



## COURSE WISE INTAKE CAPACITY

Course Name	Gen.	S.T (6%)	S.C (22%)	O.B.C(A) (10%)	O.B.C(B) (7%)	PH (3%)	Sports Quota (5%)	Total
<b>Accountancy (Hons.)</b>	34	5	17	8	5	2	4	<b>75</b>
<b>Bengali (Hons.)</b>	31	4	14	7	5	1	3	<b>65</b>
<b>English (Hons.)</b>	31	4	14	7	5	1	3	<b>65</b>
<b>History (Hons.)</b>	31	4	14	7	5	1	3	<b>65</b>
<b>Geography (Hons.)</b>	19	2	9	4	3	1	2	<b>40</b>
<b>Philosophy (Hons.)</b>	19	2	9	4	3	1	2	<b>40</b>
<b>Education (Hons.)</b>	19	2	9	4	3	1	2	<b>40</b>
<b>Hindi (Hons.)</b>	19	2	9	4	3	1	2	<b>40</b>
<b>Physics (Hons.)</b>	10	1	4	2	1	1	1	<b>20</b>
<b>Sanskrit (Hons.)</b>	10	1	4	2	1	1	1	<b>20</b>
<b>Music (Hons.)</b>	10	1	4	2	1	1	1	<b>20</b>
<b>Zoology (Hons.)</b>	10	1	4	2	1	1	1	<b>20</b>
<b>Chemistry (Hons.)</b>	10	1	4	2	1	1	1	<b>20</b>
<b>Computer Sc. (Hons.)</b>	19	2	9	4	3	1	2	<b>40</b>
<b>Mathematics (Hons.)</b>	10	2	6	3	2	1	1	<b>25</b>
<b>Microbiology (Hons.)</b>	19	2	9	4	3	1	2	<b>40</b>
<b>B.A (Programme)</b>	235	30	110	50	35	15	25	<b>500</b>
<b>B.Com (Programme)</b>	69	9	33	15	11	5	8	<b>150</b>
<b>B.Sc (Programme)</b>	47	6	22	10	7	3	5	<b>100</b>
<b>B.B.A (Hons.)</b>	33	4	15	7	5	2	4	<b>70</b>
<b>B.C.A (Hons.)</b>	33	4	15	7	5	2	4	<b>70</b>
<b>TOTAL</b>								<b>1525</b>

## COURSE WISE ADMISSION FEES DETAILS

<b>ADMISSION FEES STRUCTURE 2019-20</b>	<b>AP</b>	<b>CP</b>	<b>APG</b>	<b>HISH ENGH BNGH HINH PHIH EDCH SANH MUSH</b>	<b>CGRH</b>	<b>GEOH</b>	<b>MTMH SP</b>	<b>COSH</b>	<b>MCBH PHYH  ZOOH CHEH</b>
<b>Admission Fee</b>	100.00	100.00	100.00	100.00	100.00	100.00	100.00	100.00	100.00
<b>Tuition Fees (June to September)</b>	300.00	340.00	440.00	400.00	400.00	540.00	500.00	540.00	540.00
<b>Development Fees</b>	300.00	300.00	300.00	300.00	300.00	300.00	300.00	300.00	300.00
<b>Session Charges</b>	100.00	100.00	100.00	100.00	100.00	100.00	100.00	100.00	100.00
<b>Electric / Water Charges</b>	300.00	300.00	300.00	300.00	300.00	300.00	300.00	300.00	300.00
<b>College Examination Fees</b>	100.00	100.00	100.00	100.00	100.00	100.00	100.00	100.00	100.00
<b>Library Caution Deposit</b>	200.00	200.00	200.00	200.00	200.00	200.00	200.00	500.00	500.00
<b>Library Contribution</b>	150.00	150.00	150.00	150.00	150.00	150.00	150.00	150.00	150.00
<b>Magazine Fees</b>	50.00	50.00	50.00	50.00	50.00	50.00	50.00	50.00	50.00
<b>College Registration Fees</b>	100.00	100.00	100.00	100.00	100.00	100.00	100.00	100.00	100.00
<b>Enrolment Fees</b>	50.00	50.00	50.00	50.00	50.00	50.00	50.00	50.00	50.00
<b>Student Aid Fund</b>	50.00	50.00	50.00	50.00	50.00	50.00	50.00	50.00	50.00
<b>Sports Fees</b>	100.00	100.00	100.00	100.00	100.00	100.00	100.00	100.00	100.00
<b>Misc. Fees</b>	30.00	30.00	30.00	30.00	30.00	30.00	30.00	30.00	30.00
<b>Laboratory Service Charge</b>			300.00		200.00	1,500.00	1,700.00	1,660.00	5,000.00
<b>Faculty Improvement Fee (June to September)</b>					500.00		400.00	600.00	1,800.00
<b>Maintenance Charge</b>	300.00	300.00	300.00	300.00	300.00	300.00	300.00	300.00	300.00
<b>Student Union</b>	200.00	200.00	200.00	200.00	200.00	200.00	200.00	200.00	200.00
<b>Saraswati Puja Contribution</b>	100.00	100.00	100.00	100.00	100.00	100.00	100.00	100.00	100.00
<b>TOTAL FEES (Rs.)</b>	<b>2,530.00</b>	<b>2,570.00</b>	<b>2,970.00</b>	<b>2,630.00</b>	<b>3,330.00</b>	<b>4,270.00</b>	<b>4,830.00</b>	<b>5,330.00</b>	<b>9,870.00</b>

B.C.A(H) Admission Fees = Rs.20800/- from which Rs. 17500/- taken as 1<sup>st</sup> semester fees

B.B.A(H) Admission Fees = Rs.18300/- from which Rs. 15000/- taken as 1<sup>st</sup> semester fees

<b>AP-</b> Arts Program	<b>CP-</b> Commerce Program	<b>SP-</b> Science Program	<b>APG-</b> Arts Program With Geography
<b>HISH-</b> History Hons.	<b>ENGH-</b> English Hons	<b>BNGH-</b> Bengali Hons	<b>HINH-</b> Hindi Hons
<b>PHIH-</b> Philosophy Hons.	<b>EDCH-</b> Education Hons	<b>SANH-</b> Sanskrit Hons	<b>MUSH-</b> Music Hons
<b>CGRH-</b> Accountancy Hons	<b>GEOH-</b> Geography Hons	<b>MTMH-</b> Mathematics Hons	<b>COSH-</b> Computer Science Hons
<b>MCBH-</b> Microbiology Hons	<b>PHYH-</b> Physics Hons	<b>ZOOH-</b> Zoology Hons	<b>CHEM-</b> Chemistry Hons.

## MINIMUM ELIGIBILITY CRITERIA (Merit INDEX Calculation)

STREAM NAME	For (10+2) ARTS Candidates	For (10+2) COMMERCE Candidates	For (10+2) SCIENCE Candidates
<b>BENGALI (HONS.)</b>	Best of two language marks + Best of 3 subject marks + Hons. Taking Subject marks. <b>(Taking Bengali as Hons. Subject , and it should be <math>\geq 45</math> &amp; Check the aggregate percentage should be <math>\geq 45</math> )</b>	Best of two language marks + Best of 3 subject marks + Hons. Taking Subject marks. <b>(Taking Bengali as Hons. Subject , and it should be <math>\geq 45</math> &amp; Check the aggregate percentage should be <math>\geq 45</math>)</b>	Best of two language marks + Best of 3 subject marks + Hons. Taking Subject marks. <b>(Taking Bengali as Hons. Subject , and it should be <math>\geq 45</math> &amp; Check the aggregate percentage should be <math>\geq 45</math>)</b>
<b>ENGLISH (HONS.)</b>	Best of two language marks + Best of 3 subject marks + Hons. Taking Subject marks. <b>(Taking English as Hons. Subject , and it should be <math>\geq 45</math> &amp; Check the aggregate percentage should be <math>\geq 45</math>)</b>	Best of two language marks + Best of 3 subject marks + Hons. Taking Subject marks. <b>(Taking English as Hons. Subject , and it should be <math>\geq 45</math> &amp; Check the aggregate percentage should be <math>\geq 45</math>)</b>	Best of two language marks + Best of 3 subject marks + Hons. Taking Subject marks. <b>(Taking English as Hons. Subject , and it should be <math>\geq 45</math> &amp; Check the aggregate percentage should be <math>\geq 45</math>)</b>
<b>HINDI (HONS.)</b>	Best of two language marks + Best of 3 subject marks + Hons. Taking Subject marks. <b>(Taking Hindi as Hons. Subject , and it should be <math>\geq 45</math> &amp; Check the aggregate percentage should be <math>\geq 45</math>)</b>	Best of two language marks + Best of 3 subject marks + Hons. Taking Subject marks. <b>(Taking Hindi as Hons. Subject , and it should be <math>\geq 45</math> &amp; Check the aggregate percentage should be <math>\geq 45</math>)</b>	Best of two language marks + Best of 3 subject marks + Hons. Taking Subject marks. <b>(Taking Hindi as Hons. Subject , and it should be <math>\geq 45</math> &amp; Check the aggregate percentage should be <math>\geq 45</math>)</b>
<b>EDUCATION (HONS.)</b>	Best of two language marks + Best of 3 subject marks + Hons. Taking Subject marks. <b>(Taking Education as Hons. Subject , and it should be <math>\geq 45</math> &amp; Check the aggregate percentage should be <math>\geq 45</math>)</b> <b>OR</b> Best of two language marks + Best of 3 subject marks + Hons. Taking Subject marks. <b>(Taking Highest of best 3 subjects as Hons. Subject , and it should be <math>\geq 45</math> &amp; Check the aggregate percentage should be <math>\geq 45</math>)</b>	Best of two language marks + Best of 3 subject marks + Hons. Taking Subject marks. <b>(Taking Highest of best 3 subjects as Hons. Subject , and it should be <math>\geq 45</math> &amp; Check the aggregate percentage should be <math>\geq 45</math>)</b>	Best of two language marks + Best of 3 subject marks + Hons. Taking Subject marks. <b>(Taking Highest of best 3 subjects as Hons. Subject , and it should be <math>\geq 45</math> &amp; Check the aggregate percentage should be <math>\geq 45</math>)</b>

STREAM NAME	For (10+2) ARTS Candidates	For (10+2) COMMERCE Candidates	For (10+2) SCIENCE Candidates
<b>GEOGRAPHY (HONS.)</b>	Best of two language marks + Best of 3 subject marks + Hons. Taking Subject marks. <b>(Taking Geography as Hons. Subject , and it should be &gt;=45 &amp; Check the aggregate percentage should be &gt;=45)</b>	Best of two language marks + Best of 3 subject marks + Hons. Taking Subject marks. <b>(Taking Economics Geography as Hons. Subject , and it should be &gt;=45 &amp; Check the aggregate percentage should be &gt;=45)</b>	Best of two language marks + Best of 3 subject marks + Hons. Taking Subject marks. <b>(Taking highest of Mathematics or Computer Science as Hons. Subject , and it should be &gt;=45 &amp; Check the aggregate percentage should be &gt;=45)</b>
<b>HISTORY (HONS.)</b>	Best of two language marks + Best of 3 subject marks + Hons. Taking Subject marks. <b>(Taking History as Hons. Subject , and it could be &gt;=45 &amp; Check the aggregate percentage should be &gt;=45)</b> <b>OR</b> Best of two language marks + Best of 3 subject marks + Hons. Taking Subject marks. <b>(Taking Highest of best 3 subjects as Hons. Subject , and it should be &gt;=45 &amp; Check the aggregate percentage should be &gt;=45)</b>	Best of two language marks + Best of 3 subject marks + Hons. Taking Subject marks. <b>(Taking Highest of best 3 subjects as Hons. Subject , and it should be &gt;=45 &amp; Check the aggregate percentage should be &gt;=45)</b>	Best of two language marks + Best of 3 subject marks + Hons. Taking Subject marks. <b>(Taking Highest of best 3 subjects as Hons. Subject , and it should be &gt;=45 &amp; Check the aggregate percentage should be &gt;=45)</b>
<b>PHILOSOPHY (HONS.)</b>	Best of two language marks + Best of 3 subject marks + Hons. Taking Subject marks. <b>(Taking Philosophy as Hons. Subject , and it could be &gt;=45 &amp; Check the aggregate percentage should be &gt;=45)</b> <b>OR</b> Best of two language marks + Best of 3 subject marks + Hons. Taking Subject marks. <b>(Taking Highest of best 3 subjects as Hons. Subject , and it should be &gt;=45 &amp; Check the aggregate percentage should be &gt;=45)</b>	Best of two language marks + Best of 3 subject marks + Hons. Taking Subject marks. <b>(Taking Highest of best 3 subjects as Hons. Subject , and it should be &gt;=45 &amp; Check the aggregate percentage should be &gt;=45)</b>	Best of two language marks + Best of 3 subject marks + Hons. Taking Subject marks. <b>(Taking Highest of best 3 subjects as Hons. Subject , and it should be &gt;=45 &amp; Check the aggregate percentage should be &gt;=45)</b>

STREAM NAME	For (10+2) ARTS Candidates	For (10+2) COMMERCE Candidates	For (10+2) SCIENCE Candidates
<b>SANSKRIT (HONS.)</b>	Best of two language marks + Best of 3 subject marks + Hons. Taking Subject marks. <b>(Taking Sanskrit as Hons. Subject , and it should be <math>\geq 45</math> &amp; Check the aggregate percentage should be <math>\geq 45</math> )</b>	<b>NOT ELIGIBLE</b>	<b>NOT ELIGIBLE</b>
<b>MUSIC (HONS.)</b>	Best of two language marks + Best of 3 subject marks + Hons. Taking Subject marks. <b>(Taking Music as Hons. Subject , and it should be <math>\geq 45</math> &amp; Check the aggregate percentage should be <math>\geq 45</math> )</b> OR Best of two language marks + Best of 3 subject marks + Hons. Taking Subject marks. <b>(Taking Highest of best 3 subjects as Hons. Subject , and it should be <math>\geq 45</math> &amp; Check the aggregate percentage should be <math>\geq 45</math> )</b>	Best of two language marks + Best of 3 subject marks + Hons. Taking Subject marks. <b>(Taking Highest of best 3 subjects as Hons. Subject , and it should be <math>\geq 45</math> &amp; Check the aggregate percentage should be <math>\geq 45</math> )</b>	Best of two language marks + Best of 3 subject marks + Hons. Taking Subject marks. <b>(Taking Highest of best 3 subjects as Hons. Subject , and it should be <math>\geq 45</math> &amp; Check the aggregate percentage should be <math>\geq 45</math> )</b>
<b>ACCOUNTANCY (HONS.)</b>	<b>NOT ELIGIBLE</b>	Best of two language marks + Best of 3 subject marks + Hons. Taking Subject marks. <b>(Taking Accountancy as Hons. Subject , and it should be <math>\geq 45</math> &amp; Check the aggregate percentage should be <math>\geq 45</math> )</b>	Best of two language marks + Best of 3 subject marks + Hons. Taking Subject marks. <b>(Taking Mathematics as Hons. Subject , and it should be <math>\geq 45</math> &amp; Check the aggregate percentage should be <math>\geq 45</math> )</b>

STREAM NAME	For (10+2) ARTS Candidates	For (10+2) COMMERCE Candidates	For (10+2) SCIENCE Candidates
PHYSICS (HONS.)	NOT ELIGIBLE	NOT ELIGIBLE	Best of two language marks + Best of 3 subject marks + Hons. Taking Subject marks. <b>(Taking Physics as Hons. Subject , and it should be <math>\geq 45</math> &amp; Check the aggregate percentage should be <math>\geq 45</math>)</b>  <b>N.B:</b> And must check the candidate having the pass marks in mathematics that is $\geq 30$
COMPUTER SCIENCE (HONS.)	NOT ELIGIBLE	NOT ELIGIBLE	Best of two language marks + Best of 3 subject marks + Hons. Taking Subject marks. <b>(Taking highest of Mathematics or Computer Sc. or Computer Application or Statics as Hons. Subject , and it should be <math>\geq 45</math> &amp; Check the aggregate percentage should be <math>\geq 45</math>)</b>  <b>N.B:</b> And must check the candidate having the pass marks in mathematics <b>or</b> statistics <b>or</b> electronics that is $\geq 30$
MICROBIOLOGY (HONS.)	NOT ELIGIBLE	NOT ELIGIBLE	Best of two language marks + Best of 3 subject marks + Hons. Taking Subject marks. <b>(Taking highest of Biology or Biological Sc. as Hons. Subject , and it should be <math>\geq 45</math> &amp; Check the aggregate percentage should be <math>\geq 45</math>)</b>  <b>N.B:</b> And must check the candidate having the pass marks in chemistry that is $\geq 30$
ZOOLOGY (HONS.)	NOT ELIGIBLE	NOT ELIGIBLE	Best of two language marks + Best of 3 subject marks + Hons. Taking Subject marks. <b>(Taking highest of Biology or Biological Sc. as Hons. Subject , and it should be <math>\geq 45</math> &amp; Check the aggregate percentage should be <math>\geq 45</math>)</b>

STREAM NAME	For (10+2) ARTS Candidates	For (10+2) COMMERCE Candidates	For (10+2) SCIENCE Candidates
CHEMISTRY (HONS.)	NOT ELIGIBLE	NOT ELIGIBLE	Best of two language marks + Best of 3 subject marks + Hons. Taking Subject marks. <b>(Taking Chemistry as Hons. Subject , and it should be <math>\geq 45</math> &amp; Check the aggregate percentage should be <math>\geq 45</math>)</b>  <b>N.B:</b> And must check the candidate having the pass marks in physics <b>and</b> mathematics that is $\geq 30$
MATHEMATICS (HONS.)	NOT ELIGIBLE	NOT ELIGIBLE	Best of two language marks + Best of 3 subject marks + Hons. Taking Subject marks. <b>(Taking highest of Mathematics or Statics as Hons. Subject , and it should be <math>\geq 45</math> &amp; Check the aggregate percentage should be <math>\geq 45</math>)</b>
B.A (PROGRAMME)	Best of two language marks + Best of 3 subject marks <b>Check the aggregate percentage should be <math>\geq 35</math>)</b>	Best of two language marks + Best of 3 subject marks <b>Check the aggregate percentage should be <math>\geq 35</math>)</b>	Best of two language marks + Best of 3 subject marks <b>Check the aggregate percentage should be <math>\geq 35</math>)</b>
B.Sc (PROGRAMME) in ECONOMICS	Best of two language marks + Best of 3 subject marks <b>(Check the aggregate percentage should be <math>\geq 35</math>)</b> <b>N.B:</b> The candidates having economics in (10+2) are eligible	Best of two language marks + Best of 3 subject marks <b>(Check the aggregate percentage should be <math>\geq 35</math>)</b>  <b>N.B:</b> The candidates having economics in (10+2) are eligible	Best of two language marks + Best of 3 subject marks <b>(Check the aggregate percentage should be <math>\geq 35</math>)</b>

STREAM NAME	For (10+2) ARTS Candidates	For (10+2) COMMERCE Candidates	For (10+2) SCIENCE Candidates
B.Sc (PROGRAMME)	NOT ELIGIBLE	NOT ELIGIBLE	Best of two language marks + Best of 3 subject marks <b>(Check the aggregate percentage should be <math>\geq 35</math>)</b>  <b>N.B:</b> And must check the candidate having the pass marks in Mathematics & Physics that is $\geq 30$  <b>OR</b> And must check the candidate having the pass marks in Biology & Chemistry that is $\geq 35$ <b>(Check the aggregate percentage should be <math>\geq 35</math>)</b>
B.Com (PROGRAMME)	NOT ELIGIBLE	Best of two language marks + Best of 3 subject marks <b>(Check the aggregate percentage should be <math>\geq 35</math>)</b>	Best of two language marks + Best of 3 subject marks <b>(Check the aggregate percentage should be <math>\geq 35</math>)</b>
B.C.A (HONS.)	Best of two language marks + Best of 3 subject marks + Hons. Taking Subject marks. <b>(Taking Mathematics as Hons. Subject , and it should be <math>\geq 45</math> &amp; Check the aggregate percentage should be <math>\geq 45</math>)</b>	Best of two language marks + Best of 3 subject marks + Hons. Taking Subject marks. <b>(Taking Business Math as Hons. Subject , and it should be <math>\geq 45</math> &amp; Check the aggregate percentage should be <math>\geq 45</math>)</b>	Best of two language marks + Best of 3 subject marks + Hons. Taking Subject marks. <b>(Taking highest of Mathematics or Computer Sc. or Computer Application or Statics as Hons. Subject , and it should be <math>\geq 45</math> &amp; Check the aggregate percentage should be <math>\geq 45</math>)</b>
B.B.A (HONS.)	Best of two language marks + Best of 3 subject marks + Hons. Taking Subject marks. <b>(Taking English as Hons. Subject , and it should be <math>\geq 45</math> &amp; Check the aggregate percentage should be <math>\geq 45</math>)</b>	Best of two language marks + Best of 3 subject marks + Hons. Taking Subject marks. <b>(Taking highest of Accountancy or English as Hons. Subject , and it should be <math>\geq 45</math> &amp; Check the aggregate percentage should be <math>\geq 45</math>)</b>	Best of two language marks + Best of 3 subject marks + Hons. Taking Subject marks. <b>(Taking highest of Mathematics or English as Hons. Subject , and it should be <math>\geq 45</math> &amp; Check the aggregate percentage should be <math>\geq 45</math>)</b>



- ❖ Candidates who have passed (10+2) or equivalent in **Vocational Engineering and Technology** (Securing pass marks in Mathematics) may be considered for admission into B.Sc programme courses, B.A Programme course, B.C.A (Hons), B.B.A(Hons) or arts. Those candidates who did not have mathematics or have failed to qualify in mathematics as one of their subject may be considered for admission in B.A Programme course and B.B.A(Hons.).
- ❖ Candidates who have passed (10+2) or equivalent in **Vocational Agriculture** may be considered for admission in B.A programme course and B.B.A (Hons.).
- ❖ Candidates who have passed (10+2) or equivalent Examination in **Vocational Business & Commerce** may be considered for admission into B.Com programme course and B.B.A (Hons.).
- ❖ Candidates who have passed (10+2) or equivalent Examination in **Vocational Home Science** may be considered for admission into B.A programme only.

## GENERIC SUBJECT OFFERED TO HONOURS COURSE

Honours Subject Name	Offered Generic Subject Name (ANY ONE)
PHYSICS	Mathematics
COMPUTER SCIENCE	Mathematics
CHEMISTRY	Physics/Mathematics
ZOOLOGY	Chemistry
MICROBIOLOGY	Chemistry
MATHEMATICS	Physics
GEOGRAPHY	Economics / Education / Political Science
ACCOUNTANCY	Basic of Taxation
BENGALI	English/Sanskrit/Political Science/Education/Philosophy/Economics
ENGLISH	Bengali/Sanskrit/Political Science/Education/Philosophy/Economics
HINDI	Bengali/English/Sanskrit/Political Science/Education/Philosophy/Economics
SANSKRIT	Bengali/English/Sanskrit/Political Science/Education/Philosophy/Economics
MUSIC	Bengali/English/Sanskrit/Political Science/Education/Philosophy/Economics
HISTORY	Bengali/English/Sanskrit/Political Science/Education/Philosophy/Economics
EDUCATION	Bengali/English/Sanskrit/Political Science/Philosophy/Economics
PHILOSOPHY	Bengali/English/Sanskrit/Political Science/Education/Economics

## CORE-II PAPER OFFERED TO PROGRAMME COURSE

<b>For Arts Discipline</b>	
<b>Programme Subject Name</b>	<b>Offered Core-II Subject Name (ANY ONE)</b>
B.A Program In Bengali	English / Hindi / Sanskrit / History / Political Science / Philosophy / Geography / Music / Economics
B.A Program In English	Bengali / Hindi / Sanskrit / History / Political Science / Philosophy / Geography / Music / Economics
B.A Program In Hindi	Bengali / English / Sanskrit / History / Political Science / Philosophy / Geography / Music / Economics
B.A Program In Sanskrit	Bengali / English / Hindi / History / Political Science / Philosophy / Geography / Music / Economics
B.A Program In History	Bengali / English / Hindi / Sanskrit / Political Science / Philosophy / Geography / Music / Economics
B.A Program In Political Science	Bengali / English / Hindi / Sanskrit / History / Philosophy / Geography / Music / Economics
B.A Program In Philosophy	Bengali / English / Hindi / Sanskrit / History / Political Science / Geography / Music / Economics
<b>For Commerce Discipline</b>	
<b>Programme Subject Name</b>	<b>Offered Core-II Subject Name (ANY ONE)</b>
B.Com Program In Financial Accounting	Basic of Taxation
<b>For Science Discipline</b>	
<b>Programme Subject Name</b>	<b>Offered Core-II &amp; Core-III Subject Name (ANY TWO)</b>
B.Sc Program In Physics	Mathematics & Chemistry
B.Sc Program In Chemistry	Zoology & Physics
B.Sc Program In Mathematics	Physics & Chemistry

